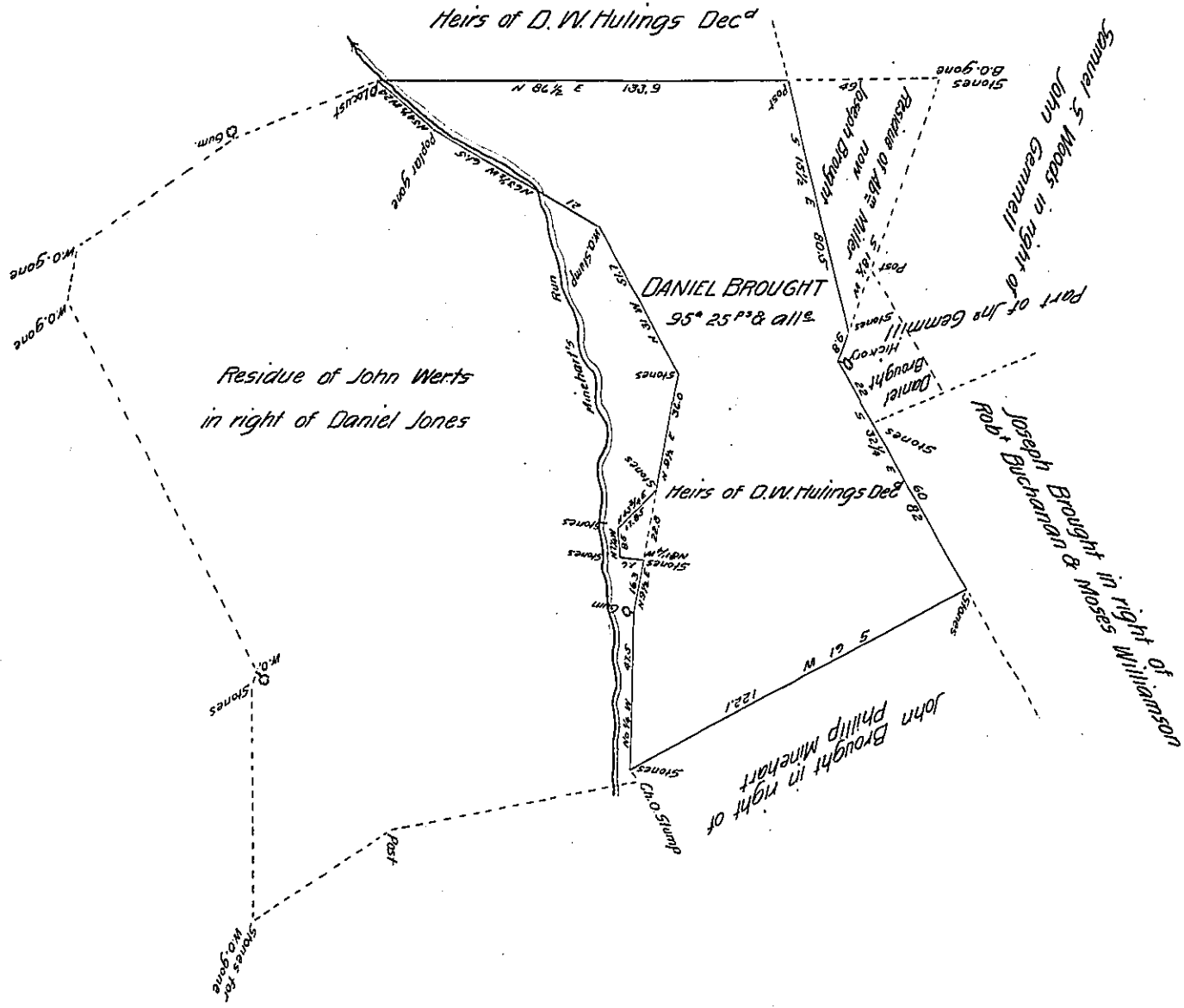


Scale 40 perches to an Inch.



A Draught of 95° 25 perches of land, with allowance of 6 per cent for Roads &c. Situate in Granville Township, Mifflin County, of which 94° 48 perches & all<sup>cs</sup> is part of a tract surveyed Sep<sup>r</sup> 15<sup>th</sup> 1794 in pursuance of a warrant Abraham Miller dated January 19<sup>th</sup> 1792 said to contain 104<sup>1</sup>/<sub>4</sub>° &c. and 137 perches & all<sup>cs</sup> is part of 186° 84 perches Surveyed December 7<sup>th</sup> 1820 for John Werts in pursuance of a warrant to Daniel Jones dated May 23<sup>rd</sup> 1794. Resurveyed the above by the lines on the ground in part April 6<sup>th</sup> 1854 and the remainder December 2<sup>nd</sup> 1859 for Daniel Brought and for Thomas M. Hulings, Administrator of the Estate of D. W. Hulings, Dec<sup>d</sup> who appear to be the present owners & desire a Patent for it.

John Swartzell, C. S.

To John Rowe Esq

Surveyor General of Penn<sup>a</sup>

IN TESTIMONY that the above is a copy of the original remaining on file in the Department of Internal Affairs of Pennsylvania, made conformably to an Act of Assembly approved the 16th day of February, 1833, I have hereunto set my Hand and caused the Seal of said Department to be affixed at Harrisburg, this

twelfth day of June 1906

*James N. Harrison*  
Secretary of Internal Affairs.